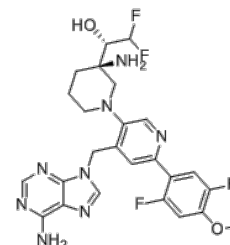


Product Name : KTX-1001
Cat. No. : PC-21038
CAS No. : 2604513-16-6
Molecular Formula : C₂₅H₂₆F₄N₈O₂
Molecular Weight : 546.53
Target : Histone Methyltransferase (HMTase)
Solubility : 10 mM in DMSO
1. Patent WO2021026803 A1



CAS: 2604513-16-6

Biological Activity

KTX-1001 is a potent, selective histone methyltransferase **NSD2** (WHSC1, MMSET) inhibitor targeting the catalytic SET domain.

References

